

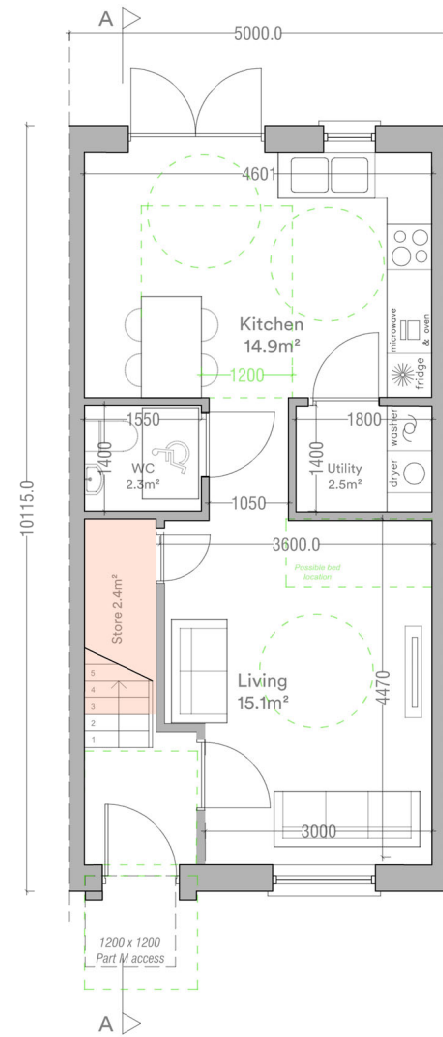
House Type P1  
2 Bed / 4 Person

Terrace

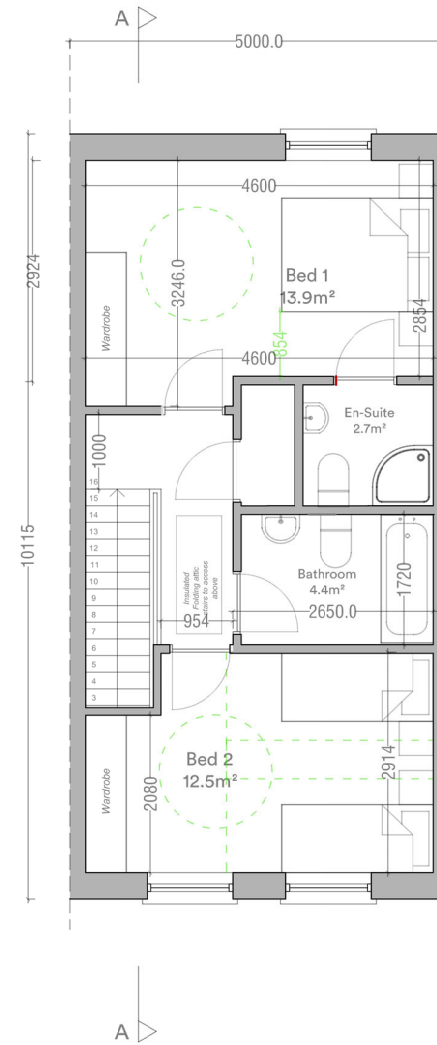
Total Floor Area	86m <sup>2</sup>	(80m <sup>2</sup> )
Ground Floor Area	43m <sup>2</sup>	
First Floor Area	43m <sup>2</sup>	
Total Living Area	30m <sup>2</sup>	(30m <sup>2</sup> )
Total Bedroom Area	26.4 m <sup>2</sup>	(25m <sup>2</sup> )
Total Storage Area	5.8m <sup>2</sup>	(4m <sup>2</sup> )

Minimum standards shown in parentheses  
Refer to site layout for handing and orientation

Storage Area



House Type P1  
Ground Floor Plan  
43.3m<sup>2</sup>



House Type P1  
First Floor Plan  
43.3m<sup>2</sup>



Note: Please Refer to Site Plan for Handing and Orientation

